



# PALADIN

ALTERNATIVE INVESTMENTS



## SCOTLAND 5 REGION DISTILLERY TOUR





## OUR MISSION

---

To provide wealth generation, preservation and risk mitigations through alternative physical asset classes in an

**#Ethical** manner

providing **#Transparent** information and

**#Diverse** investment opportunities.



## SCOTLAND 5 REGION DISTILLERY TOUR

**Enjoy amazing vistas, Scottish history and just have fun! It's a tour like no other**

**Completely managed and curated tour experience! from Arrival Hotel to departure on Day 6! We manage everything end to end**

**Tour party receives special rates (if interested) in investing in whisky cask program during or post tour! Once you've seen it all PAI is there to ensure the right investment portfolio should you wish to**

### **6 nights / 6 days**

All **5 regions** of Scotland

Guaranteed **tasting** in all 5 regions

**20 distilleries** with top names included (Macallan, Springbank, Ardbeg - Yes! They are all there)

Exclusive **behind the scenes** access to many distilleries

Certified **Whisky Ambassador** traveling throughout entire tour

Arrival in - **4 or 5-star Hotel** in Edinburgh

Welcome by Scottish Whisky Association certified Whisky Ambassador and Paladin Team



## SPEYSIDE

The most densely populated whisky region in the world, famous for fertile glens and, of course, the River Spey. Speyside whiskies are known for being full of fruit. Apples, pears, honey, vanilla and spices all have a part to play in the flavor expressions from this region, which are commonly matured in Sherry casks.

Distillery	Activity
Glenlivet	Behind the scenes tour
Aberlour	Tasting
Macallan	Photo Op & Visitor Centre
Glenfiddich	Photo Op & Visitor Centre
Glenallachie	Photo Op & Visitor Centre
Strathisla	Photo Op & Visitor Centre
Benromach	Photo Op & Visitor Centre



**Aberlour** Your tasting will be located in the stunning Fleming rooms. Previously reserved for management only, now open for you to take a step back in history to where the vital decisions were made in Aberlour's illustrious 200-year history. Brand ambassador or distillery manager will lead the tasting. 4-5 expressions of hard-to-find Aberlour whiskies, a few of which you can only try at the distillery.



## HIGHLANDS

This region, which also takes in the islands, has a huge diversity of flavors and characters. From lighter whiskies all the way through salty coastal malts, the Highlands offers a Scotch for all palates.

Distillery	Activity
GlenMorangie	Photo Op & Visitor Centre
Dalwhinnie	Tasting
Oban	Photo Op & Visitor Centre



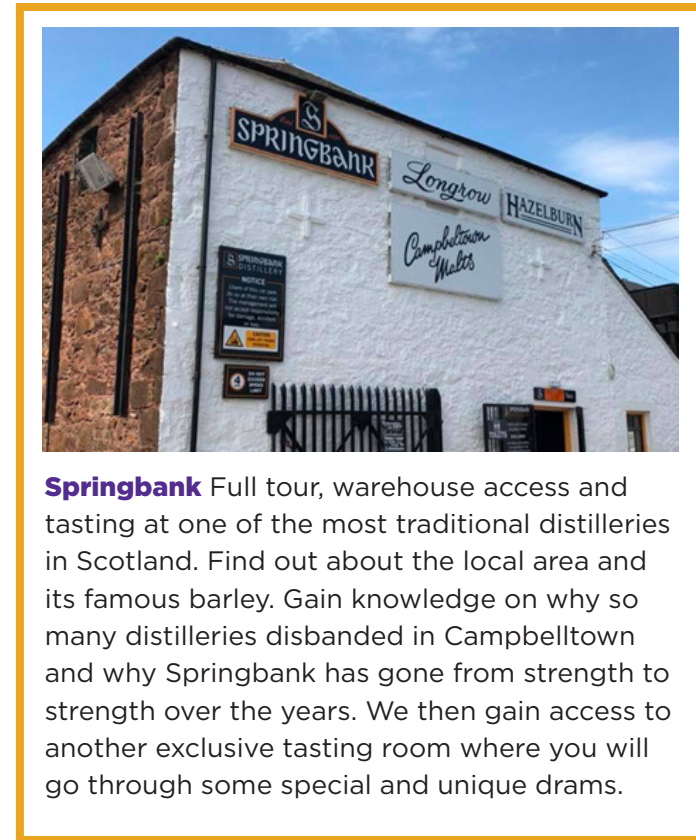
**Dalwhinnie** A tutored tasting of four Dalwhinnie Single Malts, individually paired with Iain Burnett Highland Chocolatier Chocolates. Sample the unique treat of pairing with Chocolates. One of the highest distilleries in the world and second highest in Scotland, right in the middle of the Cairngorm mountain range. Meet and discuss whisky and Dalwhinnie's history with one of the top whisky ambassadors in the region. Immense local knowledge and passion for a Dalwhinnie.



## CAMPBLETOWN

Campbletown whiskies are varied and full of flavor. Hints of salt, smoke, fruit, vanilla and toffee mingle in whiskies of robust and rich character.

Distillery	Activity
Springbank	Tasting & Behind the scenes tour
Glengyle	Photo Op & Visitor Centre
Glen Scotia	Behind the scenes tour



**Springbank** Full tour, warehouse access and tasting at one of the most traditional distilleries in Scotland. Find out about the local area and its famous barley. Gain knowledge on why so many distilleries disbanded in Campbeltown and why Springbank has gone from strength to strength over the years. We then gain access to another exclusive tasting room where you will go through some special and unique drams.



## ISLAY

Islay (pronounced 'eye-luh') is a magical island where most of its population are involved in whisky production. Famous for fiery, heavily peated whiskies.



### Lagavulin - Tutored Warehouse Maturation Tasting

Warehouse demonstration hosted by Lagavulin's top ambassador. You will be taken through a series of whiskies drawn from the casks sitting right in front of you in the warehouse. Being in the presence of casks within a distillery is always a treat and memorable moment. To visit such an iconic distillery as Lagavulin, with its world-renowned 16-year-old expression and a series of rarely seen cask strength samples - this is the whisky nirvana to many. Add to the mix the guiding hand of knowledgeable staff, that's a recipe for success, but more importantly, memories that any attendee will treasure.

Distillery	Activity
Lagavulin	Tasting & Behind the scenes tour
Ardbeg	Photo Op & Visitor Centre
Laphroaig	Behind the scenes tour
Bowmore	Photo Op & Visitor Centre
Bunnahabhain	Photo Op & Visitor Centre





## LOWLANDS

Soft and smooth malts are characteristic of this region, offering a gentle, elegant palate reminiscent of grass, honeysuckle, cream, ginger, toffee, toast and cinnamon. The whiskies are often lighter in character and perfect for pre-dinner drinks.

Distillery	Activity
Auchentoshan	Tasting & Behind the scenes tour
Holyrood	Photo Op & Visitor Centre



**Auchentoshan** The Glasgow city distillery. Meet with a local whisky expert and take an upgraded tour through the whole Lowland whisky making process. A lot of what's best about whisky can be found in its story. You'll find one of the most entertaining whisky ambassadors around at Auchentoshan. You'll visit the still house, warehouse and exclusive bar. Opportunity to sample some of the unique beer they produce and a Lowland style whisky cocktail. As the Lowland process is slightly different, you will find out details on this and the quite unusual history of a distillery at home in Scotland's largest city.



# Tastings

All experiences are “tutored” tastings.

Including a minimum of three whiskies at each distillery.

**Aberlour - Tasting in private room**

**Dalwhinnie - Tasting in private area**

**Springbank - Full tour and tasting**

**Lagavulin - Tasting inside the warehouse**

**Auchentoshan - Full tour and tasting**



## Behind the Scenes Tours

A chance to get up close to the production areas with a local staff member. Learn about the fermentation, distillation, maturation, wood selection, local history, export markets, the difference between the whisky made for blending and single malts. Compare and contrast the subtle differences in the behind the scenes operations from distilleries in every Scotch region. Learn more about your own reference points for which style you enjoy the most and gain invaluable insight into the whisky business.



# Detailed Breakdown



## Arrival Day (Day 0)

Land at airport make way to hotel (self)  
Host welcome and hotel check in  
Tour debrief and etiquette  
Welcome toast

## Speyside (Day 1)

0630 Depart Edinburgh  
Couple of stops on way to Speyside for photos/break.  
1000 - 1200 Glenlivet Tour and Tasting  
1230 - 1330 Aberlour village for lunch  
1400 - 1530 Aberlour upgraded distillery tasting and tour around their site  
1600 - 1730 Macallan distillery visit - free time for exhibition - exclusive shop and Macallan bar  
1830 Arrive at hotel

## Speyside (Day 2)

0930 Depart hotel  
1000 - 1100 Glenallachie - Shop - time to look around shop/Aberlour village  
1115 - 1145 Time to explore Dufftown  
1200 - 1300 Lunch in Dufftown  
1330 - 1430 Glenfiddich - exhibition, malt barn bar and Glenfiddich shop  
1500 - 1545 Strathisla - Shop / bar and look around distillery  
1600 - 1700 Benromach - Shop / bar and look around distillery  
1800 Arrive at hotel

## Highlands (Day 3)

0830 Depart hotel  
1000 - 1100 Glenmorangie - exhibition - shop and bar  
1300 - 1400 Dalwhinnie - Upgraded tasting - in depth distillery  
1400 - 1445 Lunch in Dalwhinnie area  
1645 - 1800 Oban Distillery - visit - shop - photos  
1815 - Arrive at hotel around

## Campbeltown (Day 4)

0830 Depart Oban  
1000 - 1200 Springbank - Behind the scenes tour and upgraded tasting  
1215 - 1315 Lunch in Campbeltown  
1330 - 1430 Glengyle - visit - shop and look around  
1500 - 1600 Glen Scotia - Visit - Behind the scenes tour and tasting  
1600 - 1700 Time to explore Campbeltown  
1800 Arrive hotel

## Islay (Day 5)

0600 Depart hotel  
1100 - 1200 Lagavulin upgraded tasting in warehouse  
1230 - 1330 Laphroaig - Behind the scenes tour and tasting  
1345 - 1430 Lunch - Port Ellen  
1500 - 1530 Bunnahabhain visit to distillery and shop  
1545 - 1645 Ardbeg visit - shop and look around  
1715 - 1800 Bowmore - visit shop and look around  
1800 Arrive at hotel around

## Lowlands (Day 6)

0600 Depart hotel  
1200 - 1300 Arrive for lunch on banks of Loch Lomond  
1330 - 1500 Auchentoshan upgraded tasting and tour  
1615 - 1730 Holyrood distillery visit, exhibition, bar  
Return to Edinburgh hotel



## COST - CHOOSE YOUR STYLE

### Paladin Gold

Party size 4 to 10 people

Cost per person (accommodations)

**£4,200 / \$5,800 (Single)**

**£3,800 / \$5,200 (Double)**

4 star and luxury guesthouses

Premium Vehicles

Bigger party sizes can be accommodated for one group (no more than 15)

### Paladin Platinum

Party size 4 to 8 people

Cost per person (accommodations)

**£4,850 / \$6,700 (Single)**

**£4,200 / \$5,800 (Double)**

5 star and exquisite luxury heritage hotels throughout

Ultra luxe vehicles only - BMW / Mercedes / Audi

Never over 8 people - ideal tour size will be maintained around 6-8 individuals



## WHAT'S INCLUDED? WHAT'S NOT?

### Included

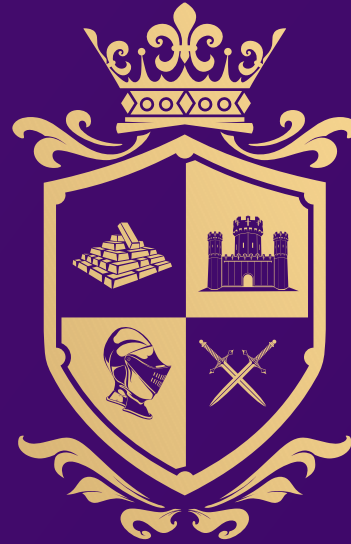
Accommodations during tour  
Breakfasts (including vegetarian options)  
Lunches (including vegetarian options)  
Transport / Driver  
All specified tours (per previous slides)  
Ferry crossings  
Water bottles  
Whisky Ambassador guide (traveling throughout)  
Welcome toast on arrival evening  
Departure memento - surprise

### Not Included

Any EXTRA experiences at distilleries (to be purchased independently)  
Airport pickup / Drop off (included for Platinum)  
Accommodation other than during the tour duration (Saturday night on own)  
Bottle purchases at distillery  
Dinners  
Beverages other than water  
Snacks  
Cask investment  
Any other misc. item not explicitly identified

### NOTES

1. Every effort will be made to tie up the tour with the flight schedule. However due to circumstances beyond our control we cannot guarantee this. Thus, any early arrival and later departure are to be arranged by the touring party on their own accord directly with the hotel (this might incur extra charges).
2. All extra payments will have to be settled prior to departure from each hotel.
3. Tour starts upon check in on Sunday, in line with hotel policy of 1500 hours check-in and finishes with drop off at the same hotel on Saturday evening (or to Edinburgh International Airport). Any booking and arrangements post this drop off is your own responsibility.
4. This is the firm itinerary. However, in any unforeseen circumstances, any changes to the itinerary will be to like for like distillery replacements and experiences.
5. All prices are subject to change. Please contact Paladin for current pricing.



# PALADIN

ALTERNATIVE INVESTMENTS

ETHICAL | TRANSPARENT | DIVERSE

**FOLLOW UP : [INFO@PALADININVESTING.COM](mailto:INFO@PALADININVESTING.COM) OR [WWW.PALADININVESTING.COM](http://WWW.PALADININVESTING.COM)**